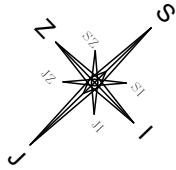




## ORJENTACIJA

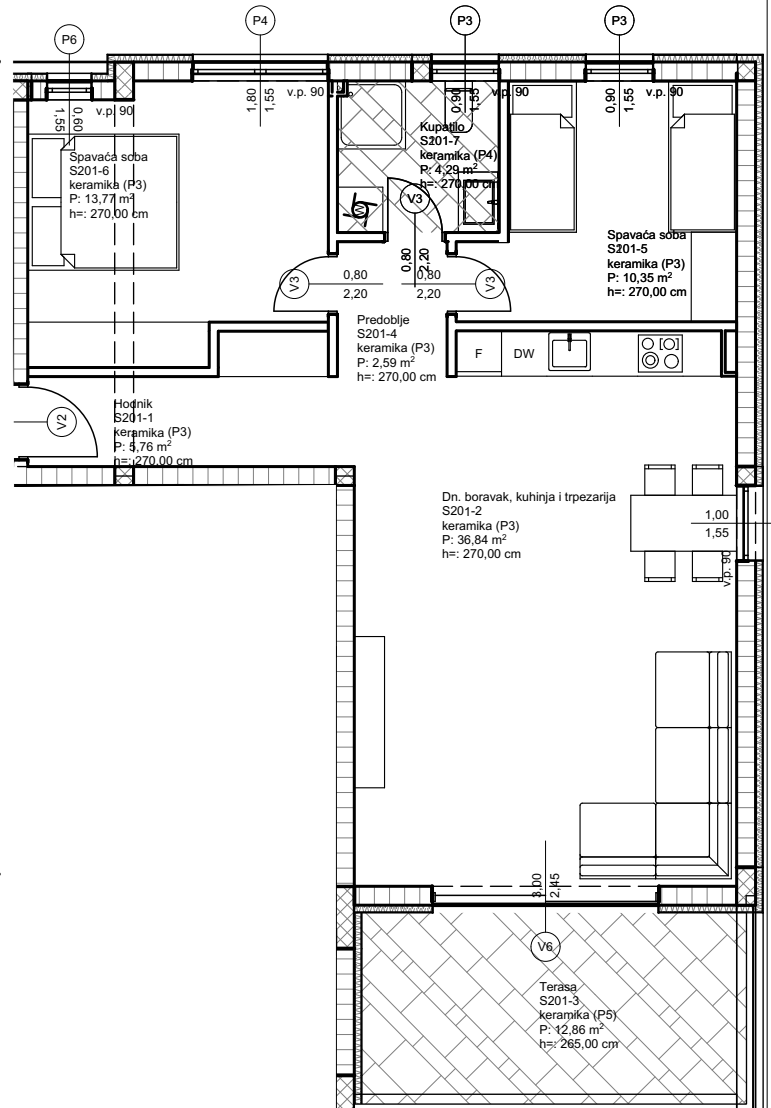
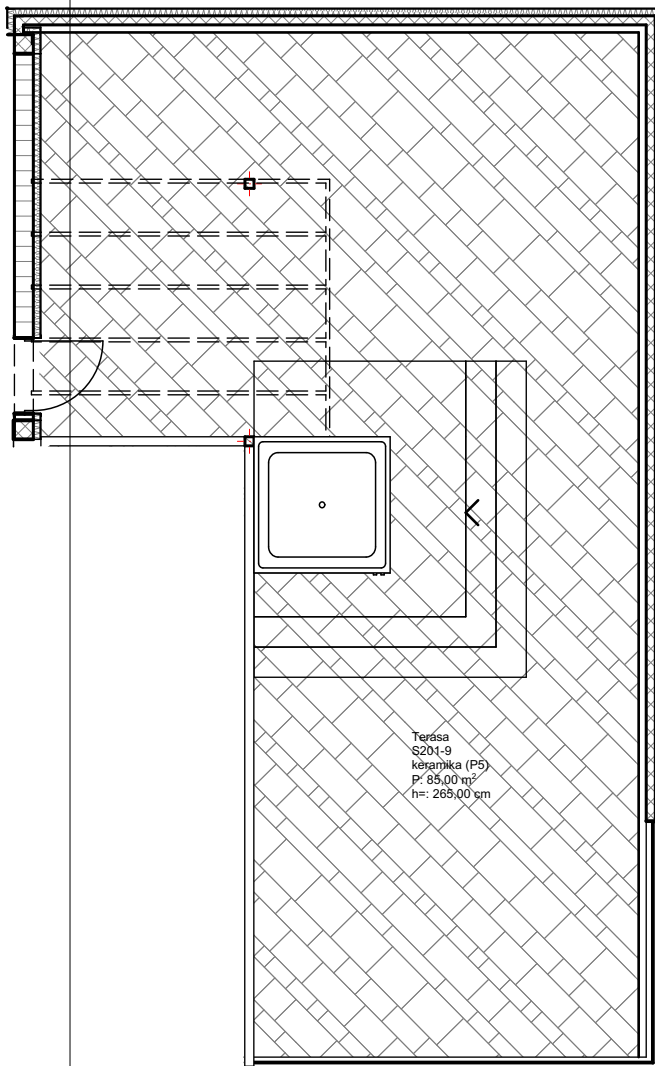


## OSNOVA TERASE

## POLOŽAJ STANA



## OSNOVA STANA



### STAN 201

Oznaka	Namjena prostorije	Bruto površina stana	Netto prodajna Površina stana
S201-1	Hodnik	5,76 m <sup>2</sup>	5,76 m <sup>2</sup>
S201-2	Dn.boravak, kuh. i trpez.	36,84 m <sup>2</sup>	36,84 m <sup>2</sup>
S201-3	Terasa (0,50x12,86)	12,86 m <sup>2</sup>	6,43 m <sup>2</sup>
S201-4	Predoblje	2,59 m <sup>2</sup>	2,59 m <sup>2</sup>
S201-5	Spavaća soba	10,35 m <sup>2</sup>	10,35 m <sup>2</sup>
S201-6	Spavaća soba	13,77 m <sup>2</sup>	13,77 m <sup>2</sup>
S201-7	Kupatilo	4,29 m <sup>2</sup>	4,29 m <sup>2</sup>
S201-8	Terasa (0,20x85)	85,00 m <sup>2</sup>	21,25 m <sup>2</sup>
S201-9	Parking mjesto (0,20x12,5)	12,50 m <sup>2</sup>	2,50 m <sup>2</sup>
		<b>183,96 m<sup>2</sup></b>	<b>103,78 m<sup>2</sup></b>

ZGRADA	STAN br.	KAT	prodajna kvadratura stana
VILLA MARIS	S - 201	DRUGI KAT	103,78 m <sup>2</sup>