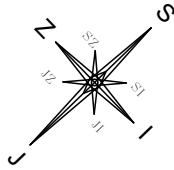
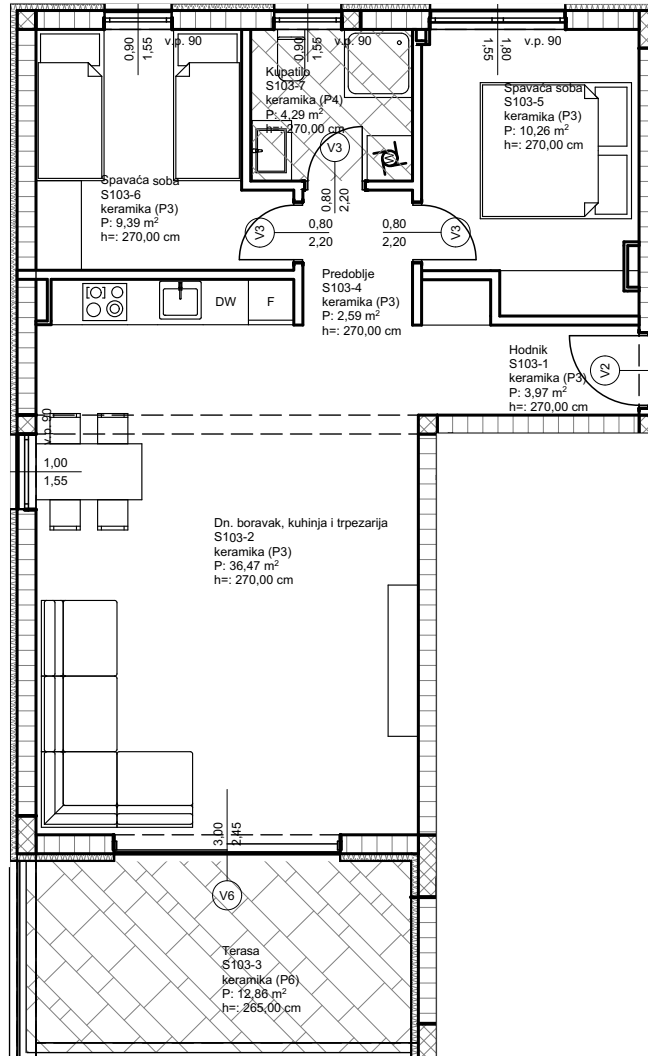




## ORJENTACIJA



## POLOŽAJ STANA



### STAN 103

Oznaka	Namjena prostorije	Bruto površina stana	Netto prodajna Površina stana
S103-1	Hodnik	3,97 m <sup>2</sup>	3,97 m <sup>2</sup>
S103-2	Dn.boravak, kuh. i trpez.	36,47 m <sup>2</sup>	36,47 m <sup>2</sup>
S103-3	Terasa (0,50x12,86)	12,86 m <sup>2</sup>	6,43 m <sup>2</sup>
S103-4	Predsooblje	2,59 m <sup>2</sup>	2,59 m <sup>2</sup>
S103-5	Spavaća soba	10,26 m <sup>2</sup>	10,26 m <sup>2</sup>
S103-6	Spavaća soba	9,39 m <sup>2</sup>	9,39 m <sup>2</sup>
S103-7	Kupatilo	4,29 m <sup>2</sup>	4,29 m <sup>2</sup>
S103-8	Parking mjesto (0,20x12,5)	12,50 m <sup>2</sup>	2,50 m <sup>2</sup>
		<b>92,33 m<sup>2</sup></b>	<b>75,90 m<sup>2</sup></b>

ZGRADA	STAN br.	KAT	prodajna kvadratura stana
VILLA LAPIS	S - 103	PRVI KAT	75,90 m <sup>2</sup>