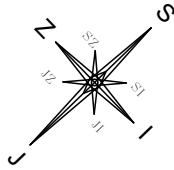
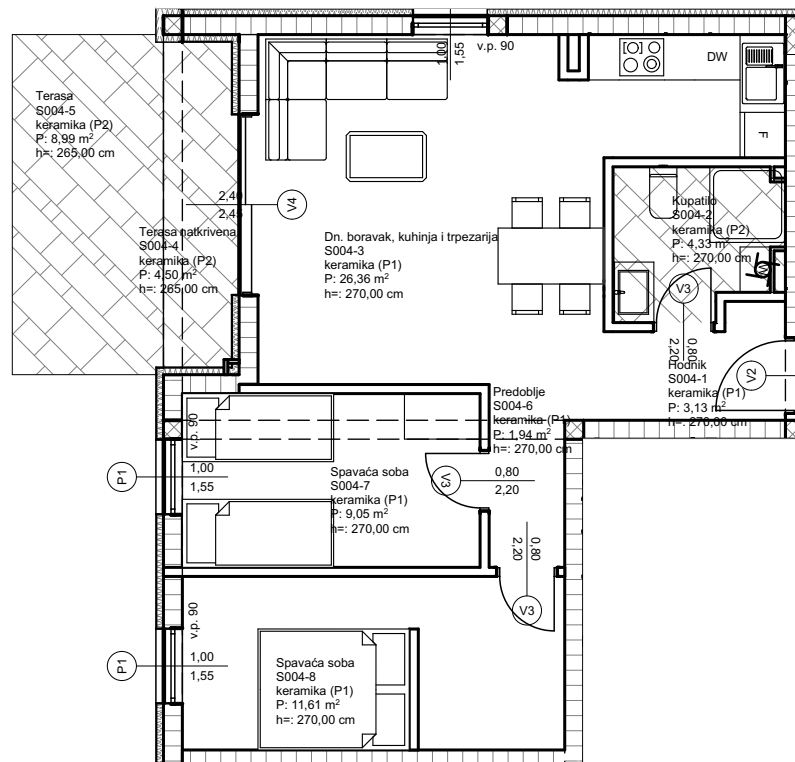




## ORJENTACIJA



## POLOŽAJ STANA



### STAN 004

Oznaka	Namjena prostorije	Bruto površina stana	Netto prodajna Površina stana
S004-1	Hodnik	3,13 m <sup>2</sup>	3,13 m <sup>2</sup>
S004-2	Kupatilo	4,33 m <sup>2</sup>	4,33 m <sup>2</sup>
S004-3	Dn.boravak, kuh. i trpez.	26,36 m <sup>2</sup>	26,36 m <sup>2</sup>
S004-4	Terasa (0,75x4,5)	4,50 m <sup>2</sup>	3,38 m <sup>2</sup>
S004-5	Terasa (0,25x8,99)	8,99 m <sup>2</sup>	2,25 m <sup>2</sup>
S004-6	Predsooblje	1,94 m <sup>2</sup>	1,94 m <sup>2</sup>
S004-7	Spavaća soba	9,05 m <sup>2</sup>	9,05 m <sup>2</sup>
S004-8	Spavaća soba	11,61 m <sup>2</sup>	11,61 m <sup>2</sup>
S004-9	Parking mjesto (0,20x12,5)	12,50 m <sup>2</sup>	2,50 m <sup>2</sup>
		<b>82,41 m<sup>2</sup></b>	<b>64,55 m<sup>2</sup></b>

ZGRADA	STAN br.	KAT	prodajna kvadratura stana
VILLA LAPIS	S - 004	PRIZEMLJE	64,55 m <sup>2</sup>