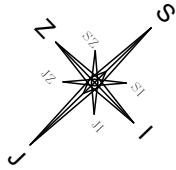
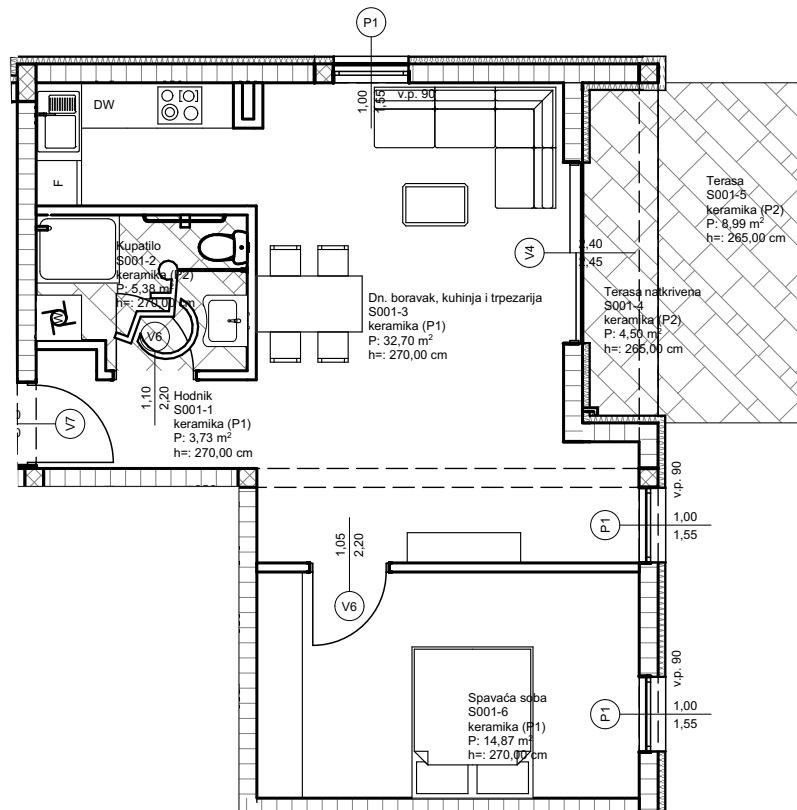




## ORJENTACIJA



## POLOŽAJ STANA



### STAN 001

Oznaka	Namjena prostorije	Bruto površina stana	Netto prodajna Površina stana
S001-1	Hodnik	3,73 m <sup>2</sup>	3,73 m <sup>2</sup>
S001-2	Kupatilo	5,38 m <sup>2</sup>	5,38 m <sup>2</sup>
S001-3	Dn.boravak, kuh. i trpez.	32,7 m <sup>2</sup>	32,70 m <sup>2</sup>
S001-4	Terasa (0,75x4,5)	4,50 m <sup>2</sup>	3,38 m <sup>2</sup>
S001-5	Terasa (0,25x8,99)	8,99 m <sup>2</sup>	2,25 m <sup>2</sup>
S001-6	Spavaća soba	14,87 m <sup>2</sup>	14,87 m <sup>2</sup>
S001-6	Parking mjesto (0,20x12,5)	12,50 m <sup>2</sup>	2,50 m <sup>2</sup>
		<b>82,67 m<sup>2</sup></b>	<b>64,81 m<sup>2</sup></b>

ZGRADA	STAN br.	KAT	prodajna kvadratura stana
VILLA LAPIS	S - 001	PRIZEMLJE	64,81 m <sup>2</sup>